

Preliminary Investigation of Using DBD Plasma for Application in Micro Combustors

Nurfarah Diana Mohd Ridzuan Tan¹, Fudhail Abdul Munir^{1,2,*}, Musthafah Mohd Tahir^{1,2}, Herman Saputro³, Masato Mikami⁴

¹ Faculty of Mechanical Engineering, Universiti Teknikal Malaysia Melaka (UTeM), 76100 Durian Tunggal Melaka, Malaysia

² Centre for Advanced Research on Energy (CARE), Universiti Teknikal Malaysia Melaka (UTeM), 76100 Durian Tunggal Melaka, Malaysia

³ Department of Mechanical Engineering Education, Universitas Sabelas Maret (UNS), Solo Indonesia

⁴ Department of Mechanical Engineering, Yamaguchi University of Japan

ABSTRACT

Dielectric-Barrier-Discharge (DBD) plasma actuator is one of the recent research topics that has caught worldwide attention. Plasma actuators are typically used in the aerospace field of study for their flow control and wide usage of different types of plasma actuators. DBD plasma actuator is an immobile actuator that is able to be utilized for its flexibility and light weight parts. Due to the wide usage of DBD plasma, it is also useful in the field of combustion in terms of air flow control. In this research, the DBD plasma actuator is tested on its ability to be applied in micro combustors based on the air flow controlling aspect, the temperature of plasma and effects of vibration of plasma. Experiments were performed in the wind tunnel with smoke generator to show the flow separation by DBD plasma actuator while infrared camera and accelerometer were used to sense the temperature and vibration respectively to investigate the effects of DBD plasma actuator on these aspects. Results show that the plasma generated have minimal effects of the flow characteristics whereas the temperature of plasma has a maximum of 90°celcius when it is generated continuously. The vibration results indicate that generating plasma produces a small amount of vibration.

Keywords:

DBD plasma actuator; flow control; wind tunnel; micro combustion

Received: 2 May 2020

Revised: 5 Jul. 2020

Accepted: 20 Sep. 2020

Published: 4 Oct. 2020

1. Introduction

In recent decade, plasma actuators have become one of the increasing research topics that are researched on globally. One of the main usages is the flow control mechanism in plasma actuators that has caught the attention of many researchers. The concept is such that plasma assisted combustion is capable of assisting ignition, flame stabilization and controlling the flow in aerodynamic and combustion. A controllable disturbance is created via plasma actuators that acts as a flow control by changing the current flow induced by the actuators. While plasma actuators brings many benefits in field research, it is also considered a very challenging topic to be applied in the field of combustion and aerodynamic in terms of flow control [1-2].

Combustion is a system which fuels are being burned in a chamber. Micro power generation is a system where it uses combustion as the base in a very small scale and is capable of producing a great amount of power. Micro combustion system uses heat produced from the chamber and converts the

* Corresponding author.

E-mail address: fudhail@utem.edu.my

heat to electricity [3]. Typically, after the conversion of heat, the electricity is combined with microelectronic devices for convenience and portable [4]. Micro power generation system size scale characteristics is up to 1-millimeter size compared to its macro and meso scale system.

There are many categories of plasma actuators which includes corona discharge [5], gliding arc plasma actuator [6-7] and dielectric barrier discharge [8-9]. Dielectric Barrier Discharge (DBD) plasma actuator is one of the most popular plasma actuators that is singular and useful in many fields of research. It can be used in different ways and is less complex compared to other classes of plasma actuators. Plasma assisted combustions shows a noteworthy contribution in decreasing emission rate, increasing efficiency of combustion and improving the fuel reformation [10-11].

Based on a few papers by He *et al.*, [12], Daud *et al.*, [13] and Sekimoto *et al.*, [14], DBD plasma actuator is made of electrodes, a film such as polyimide tape (Kapton) acting as dielectric and has a high voltage power supply. Commonly, alternating current (AC) are likely to be used as a power supply as compared to direct current (DC) with a range in kV and a frequency ranging 50Hz~50kHz [15]. Figure 1 shows the schematic of a singular DBD plasma actuator in a normal scenario.

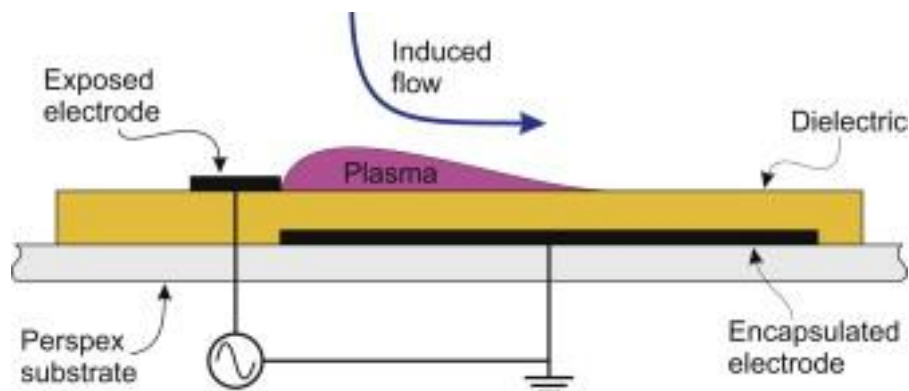


Fig. 1. Schematic of a Singular Dielectric-Barrier-Discharge (DBD) plasma actuator [14, 16]

The studies on flow control of a DBD plasma actuator in terms of the characteristics of plasma assisted application are done in two ways, simulation, and experimental studies. According to a paper that researched on both experimental and numerical investigation by Whalley and Choi [17], the visualization of the flow control field of the actuators shows a particular behavior proving that a DBD plasma actuator can entrained and quicken the surrounding fluid. A vortex or a spiral is formed and moving in a certain motion such as rolls up and then moving sideways away from the wall at specific angle. With longer time motion, a production of steady-state manner increases the momentum of the DBD plasma actuator.

Supporting the visualization results done by Whalley and Choi [17], the investigation in Kozato *et al.*, [8] uses plasma to act as a spread controller on a rectangular jet by pulsing a modulated frequency as a means to control the flow of the plasma actuator. The method of using pulse modulated frequency as the controller is very effective and there is also vortex appearing. The vortex structure in this paper are affected by the frequency and the duty ratio while efficiency of flow control is based on the frequency.

Along that, the possibilities of using DBD plasma actuator was examined on flat and curved surfaces [18]. The design proposed are varying the shape and width of the electrodes of DBD plasma actuator. A micro actuator was fabricated to investigate the effect of generated airflow on an airfoil. Noteworthy, the curved micro DBD plasma actuator displays a better capability and produces a three-dimensional (3D) flow structure compared to the straight DBD plasma actuator.

In terms of airflow assistance for DBD plasma actuators, the discharge generates a low velocity which can affect the airflow of the surroundings which in turn able to control that external airflow. Temperature is also one of the characteristics of plasma actuator where there is thermal (hot) and non-thermal (cold) plasma. DBD plasma is considered a cold plasma. Jousot *et al.*, [19] uses an infrared camera to track the temperature of his plasma actuator in two environments: quiescent air and in influence of an external force. The paper concludes that external flow causes the temperature and flow to be disturbed. Compared to quiescent air, the condition with external force shows a decrease in dielectric temperature and indicates that heat dissipation occurs much better in a turbulent boundary layer than in laminar layer.

2. Experimental Setup

A model of DBD plasma actuator was designed and constructed using materials such as polyimide film (Kapton), copper tapes at 7 mm width and a voltage supply using an ozone generator system. A platform with a dimension of 135x90x25 mm for the DBD plasma actuator was fabricated using three-dimensional (3D) printing machine. The DBD plasma actuator was placed on the fabricated platform to form a consistent data collection. The total length of DBD plasma actuator is 100 mm and was connected to the power supply via crocodile clip. The power supply that drives the plasma actuator has an input of 220V while producing 50Hz of frequency.

To test the characteristics and capability of the generated plasma actuator, a wind tunnel with a smoke generator were used at different wind velocity which are 0 m/s, 10 m/s and 14 m/s to facilitate the effect of plasma actuator on the drag coefficient produced. A visual experiment using the smoke generator was tested on the plasma actuator. Figure 2 illustrates the DBD plasma actuator is placed on the fabricated platform while being mounted onto a stable position at 0° angle of attack in the wind tunnel chamber.

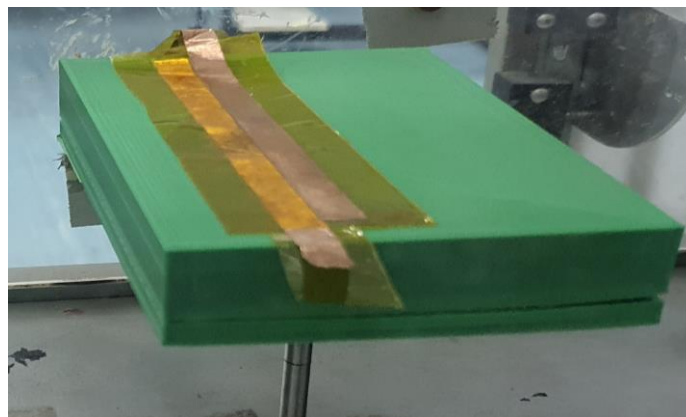


Fig. 2. DBD plasma on fabricated platform mounted in a wind tunnel chamber

The set-up for temperature testing includes an infrared camera and a computer. The image shown in Figure 3 is captured using a FLIR A615 thermal machine vision camera with a focal length 41.3 mm. The distance of camera lens to the object (DBD plasma actuator) is set to 70 mm to get a good view of thermal changes of plasma. A software called FLIR Tools was used to examine the temperature maximum temperature generated by DBD plasma actuator.

In order to investigate the effect of plasma actuator on vibration, an accelerometer is used to test the vibration frequency produced by the plasma. This parameter used a 10 mV/g sensitivity accelerometer sensor on the platform near where the plasma was produced (see Figure 4). The

program Vibration FFT Analysis software was used to capture the vibration at a sampling rate of 1kS/s for a number of 1000 of samples.

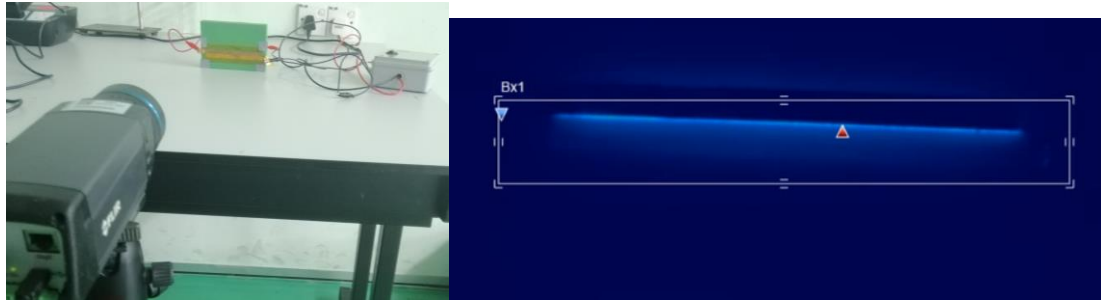


Fig. 3. Configuration to test Temperature of DBD Plasma Actuator

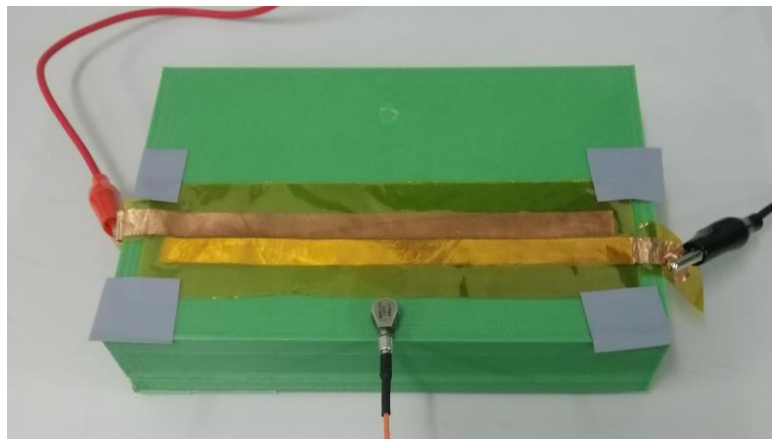


Fig. 4. Accelerometer is placed near generated DBD plasma actuator

3. Results and Discussion

3.1 Pressure Distribution

This section discusses the results obtained from the study of air flow, temperature, and vibration characteristics of DBD plasma actuator. The characteristics of flow control, maximum temperature and vibration effect are discussed in the following sub section.

3.2 Air Flow Characteristics via Wind Tunnel

The test configuration for this experiment is in Table 1 where the properties are when the plasma is On and OFF to examine if plasma can disturb the flow in a closed chamber. Besides, a visual experimentation using smoke generator is performed showing minimal effect on the flow visualisation when the plasma actuator is turned on is illustrated in Figure 5 where there is minimal change in the flow of smoke. Following the speed of wind velocity, the smoke is generated when the velocity is set to 10 m/s and 14 m/s.

Table 1
 The values drag coefficient of DBD plasma

Properties	Wind Velocity	Differential Pressure (mmH ₂ O)	Drag Coefficient at (0°)
Plasma OFF	0 m/s	47	0.00
Plasma ON	0 m/s	47	0.00
Plasma OFF	10 m/s	59	0.37
Plasma ON	10 m/s	59	0.36
Plasma OFF	14 m/s	72	0.65
Plasma ON	14 m/s	72	0.64



Fig. 5. Temperature image of DBD plasma actuator at (a) velocity 10 m/s, (b) 14 m/s

In Table 1, there is only a minimal drag coefficient difference when the plasma actuator is turned ON and OFF. Theoretically, when DBD plasma actuator is turned ON, there is a flow disturbance occurring at the generation of plasma. The papers by Whalley and Choi [17] and Kozato *et al.*, [8] show similar results in terms of effect of the flow control of DBD plasma actuator where there are vortex or compact spiral of smoke appeared when DBD plasma actuator is used. However, the preliminary experiment on the model in this study on visual flow field has no changes. One of the reasons is due to the fact that the voltage power supply is lacking to create a stronger plasma. The assumption that there is changes in visual observation of the plasma actuator is extremely minimal.

3.3 Temperature of DBD Plasma Actuator

A contactless thermal measurement is utilised in this experiment and to receive a clear image feedback from the computer, the distance of lens to the DBD plasma actuator is set to 700 mm. The Figure 6 demonstrates the heat produced by the plasma actuator with the red arrow indicating the highest heat generation spot.

Based on the results produced, and tested for a couple of times, the maximum temperature that is produced by the plasma actuator is 90°C. The DBD plasma actuator also has a very short cooling time as when the plasma is switched OFF, the temperature rapidly cool down to room temperature within seconds. Here shows that DBD plasma actuator is able to influence the temperature of an experiment depending on the external factors such as laminar or boundary layer flows.

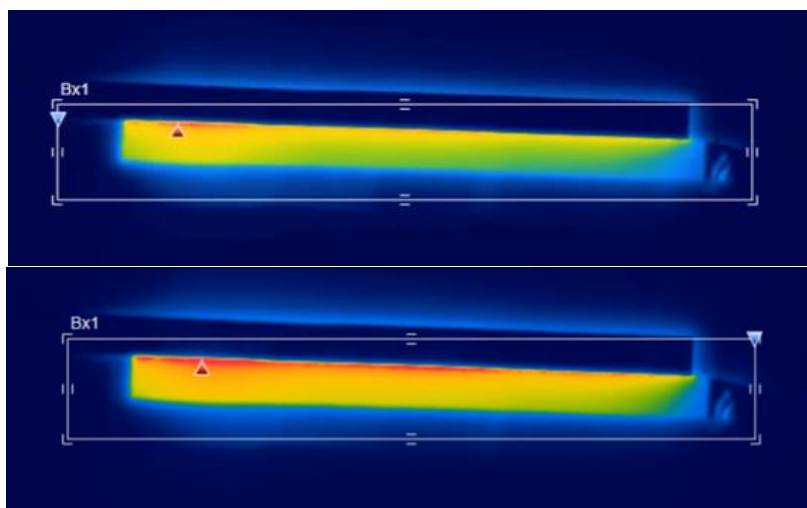


Fig. 6. Temperature image of DBD plasma actuator

3.4 Vibration Test Effect

Two graphs were constructed to form a signal versus time graph and magnitude versus frequency graph. Figure 7 shows the graphs and signifies the maximum and minimum vibration output at (0.5, 0.07) and (0.5, -0.06) respectively.

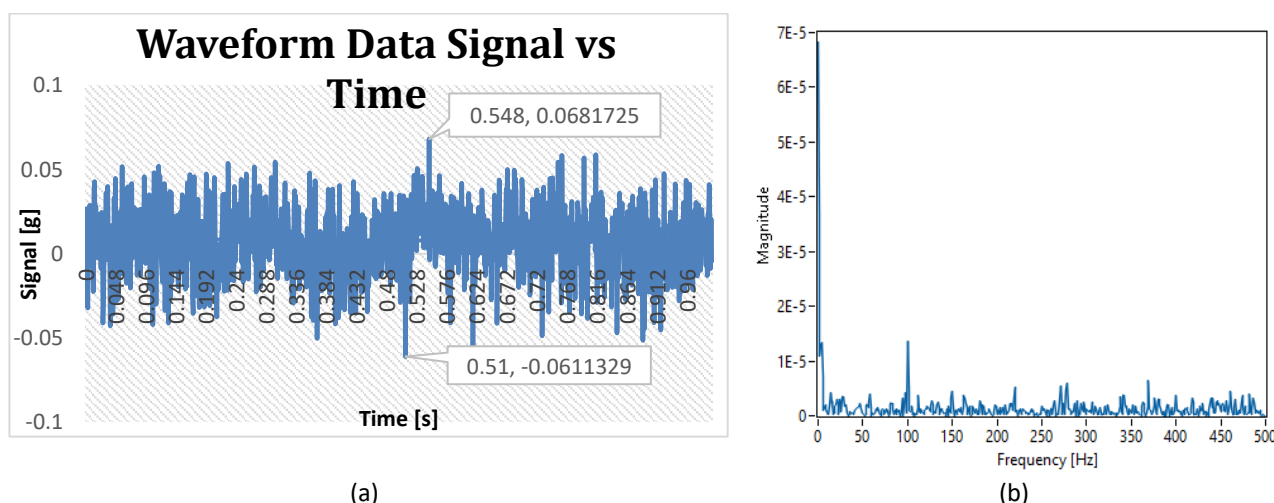


Fig. 7. Graph of vibration testing for (a) Signal vs Time and (b) Magnitude vs Frequency

The results indicate that plasma that is generated is capable of emitting vibration. The vibration produced by the DBD plasma actuator is at bare minimum where it will not affect any experimentation data in many studies such as in combustion and micro combustion.

4. Conclusions

The data of DBD plasma actuator in three different characteristics is presented. Results illustrates there is a has minimal effects of the flow characteristics generated by the plasma in the wind tunnel while the temperature measured through contactless measurement shows that the temperature of plasma has a maximum of 90° celcius when it is generated continuously. The vibration results indicate that generating plasma produces a minimal amount of vibration. Since this is a preliminary result to

test the characteristics of DBD plasma actuator, more experiments need to be conducted for further research.

Acknowledgement

This research was funded by a grant from Ministry of Higher Education of Malaysia (FRGS Grant FRGS/2018/FKM-CARe/F00370). The authors would like to thank Universiti Teknikal Malaysia Melaka (UTeM) for supporting this research activity.

References

- [1] Go, David B. *Ionization and Ion Transport*. Morgan & Claypool Publishers, 2018.
- [2] Tathiri, Gh, H. Parishani, S. G. Pouryoussefi, E. Esmaeilzadeh, S. M. Mirsajedi, M. Mirzaei, and N. Khatibzadeh. "Experimental Investigation of Separation Control on a NACA0024 Airfoil using Stationary and Non-Stationary AC-Dielectric Barrier Discharge Plasma Actuator." *Journal of Applied Fluid Mechanics* 9, no. 2 (2016):877-888.
<https://doi.org/10.18869/acadpub.jafm.68.225.24432>
- [3] Fernandez-Pello, Carlos. "Micropower generation using combustion: Issues and approaches." *Proceedings of the combustion institute* 29 (2002): 883-899.
[https://doi.org/10.1016/S1540-7489\(02\)80113-4](https://doi.org/10.1016/S1540-7489(02)80113-4)
- [4] Chou, S. K., W. M. Yang, K. J. Chua, J. Li, and K. L. Zhang. "Development of micro power generators—a review." *Applied Energy* 88, no. 1 (2011): 1-16.
<https://doi.org/10.1016/j.apenergy.2010.07.010>
- [5] Labergue, A., E. Moreau, and G. Touchard. "A parametric study of surface corona discharge along an insulating flat plate in atmospheric pressure." In *CEIDP'05. 2005 Annual Report Conference on Electrical Insulation and Dielectric Phenomena, 2005.*, pp. 490-494. IEEE, 2005.
- [6] Feng, Rong, Jun Li, Yun Wu, Jiajian Zhu, Xiliang Song, and Xipeng Li. "Experimental investigation on gliding arc discharge plasma ignition and flame stabilization in scramjet combustor." *Aerospace Science and Technology* 79 (2018): 145-153.
<https://doi.org/10.1016/j.ast.2018.05.036>
- [7] Lin, Bingxuan, Yun Wu, Yifei Zhu, Feilong Song, and Dongliang Bian. "Experimental investigation of gliding arc plasma fuel injector for ignition and extinction performance improvement." *Applied Energy* 235 (2019): 1017-1026.
<https://doi.org/10.1016/j.apenergy.2018.11.026>
- [8] Kozato, Yasuaki, Satoshi Kikuchi, Shigeki Imao, Yoshihisa Kato, and Katsumi Okayama. "Flow control of a rectangular jet by DBD plasma actuators." *International Journal of Heat and Fluid Flow* 62 (2016): 33-43.
<https://doi.org/10.1016/j.ijheatfluidflow.2016.09.014>
- [9] Tang, Yong, Jiankun Zhuo, Wei Cui, Shuiqing Li, and Qiang Yao. "Enhancing ignition and inhibiting extinction of methane diffusion flame by in situ fuel processing using dielectric-barrier-discharge plasma." *Fuel Processing Technology* 194 (2019): 106128.
<https://doi.org/10.1016/j.fuproc.2019.106128>
- [10] Sun, Wenting, Mruthunjaya Uddi, Timothy Ombrello, Sang Hee Won, Campbell Carter, and Yiguang Ju. "Effects of non-equilibrium plasma discharge on counterflow diffusion flame extinction." *Proceedings of the Combustion Institute* 33, no. 2 (2011): 3211-3218.
<https://doi.org/10.1016/j.proci.2010.06.148>
- [11] Starikovskiy, Andrey, and Nikolay Aleksandrov. "Plasma-assisted ignition and combustion." *Progress in Energy and Combustion Science* 39, no. 1 (2013): 61-110.
<https://doi.org/10.1016/j.pecs.2012.05.003>
- [12] He, Chuan, Thomas C. Corke, and Mehul P. Patel. "Plasma flaps and slats: an application of weakly ionized plasma actuators." *Journal of aircraft* 46, no. 3 (2009): 864-873.
<https://doi.org/10.2514/1.38232>
- [13] Daud, Nazri Md, Yasuaki Kozato, Satoshi Kikuchi, and Shigeki Imao. "Control of leading edge separation on airfoil using DBD plasma actuator with signal amplitude modulation." *Journal of Visualization* 19, no. 1 (2016): 37-47.
<https://doi.org/10.1007/s12650-015-0283-0>
- [14] Sekimoto, Satoshi, Satoshi Shimomura, Hiroaki Fukumoto, Kozo Fujii, Akira Oyama, and Hiroyuki Nishida. "Experimental Analysis of Burst Actuation for Separation Control around a Pitching NACA0015 Airfoil Using a DBD Plasma Actuator at low Reynolds number." In *2018 AIAA Aerospace Sciences Meeting*, p. 1551. 2018.
<https://doi.org/10.2514/6.2018-1551>

- [15] Tathiri, Gh, E. Esmailzadeh, S. M. Mirsajedi, and H. Mahdavi Moghaddam. "Experimental Investigation of" Why an AC Dielectric Barrier Discharge Plasma Actuator is Preferred to DC Corona Wind Actuator in Boundary Layer Flow Control?." *Journal of Applied Fluid Mechanics* 7, no. 3 (2014): 525-534.
<https://doi.org/10.36884/jafm.7.03.20378>
- [16] Erfani, Rasool, Tohid Erfani, Sergei V. Utyuzhnikov, and Konstantinos Kontis. "Optimisation of multiple encapsulated electrode plasma actuator." *Aerospace Science and Technology* 26, no. 1 (2013): 120-127.
<https://doi.org/10.1016/j.ast.2012.02.020>
- [17] Whalley, Richard D., and Kwing-So Choi. "The starting vortex in quiescent air induced by dielectric-barrier-discharge plasma." *Journal of Fluid Mechanics* 703 (2012): 192-203.
<https://doi.org/10.1017/jfm.2012.206>
- [18] Aono, Hikaru, Shota Yamakawa, Koh Iwamura, Shinji Honami, and Hitoshi Ishikawa. "Straight and curved type micro dielectric barrier discharge plasma actuators for active flow control." *Experimental Thermal and Fluid Science* 88 (2017): 16-23.
<https://doi.org/10.1016/j.expthermflusci.2017.05.005>
- [19] Jousot, Romain, Vincent Boucinha, Régine Weber-Rozenbaum, Hervé Rabat, Annie Leroy-Chesneau, and Dunpin Hong. "Thermal characterization of a dbd plasma actuator: Dielectric temperature measurements using infrared thermography." In *40th Fluid Dynamics Conference and Exhibit*, p. 5102. 2010.
<https://doi.org/10.2514/6.2010-5102>